

GA-AA Standard Rivet

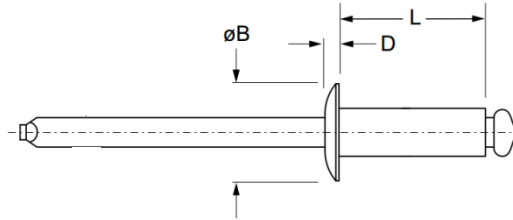
Dome head · Aluminium body · Aluminium stem
2.4 mm (3/32") - 6.4 mm (1/4")

Features

- Non-structural blind breakstem rivet designed for a wide range of applications
- Cost effective standard rivet
- Installs quickly and easily
- Coloured / painted options available on request

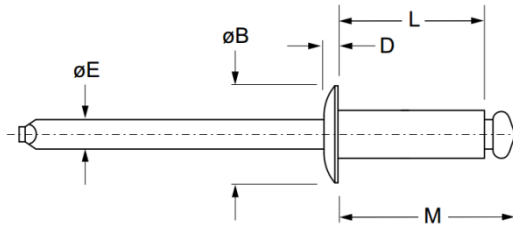
Material

- Body: Aluminium alloy 5052
- Stem: Aluminium alloy



IFI Convention

Part No.	Size ø	Grip Range		Hole Size		L max.	øB -	D -	Shear (typical) kN	Tension (typical) kN
		min.	max.	min.	max.					
GA-AA-32	2.4 (3/32")	0.5	3.2	2.46	2.54	6.4	4.52 ~ 5.03	0.81	0.31	0.36
GA-AA-34		3.2	6.4			9.5				
GA-AA-36		6.4	9.6			12.7				
GA-AA-41	3.2 (1/8")	0.5	1.6	3.28	3.38	5.4	6.05 ~ 6.65	1.02	0.53	0.67
GA-AA-42		1.6	3.2			7.0				
GA-AA-43		3.2	4.8			8.6				
GA-AA-44		4.8	6.4			10.2				
GA-AA-45		6.4	8.0			11.7				
GA-AA-46		8.0	9.6			13.3				
GA-AA-48		9.6	12.7			16.5				
GA-AA-410		12.7	15.9			19.7				
GA-AA-412		15.9	19.1			22.9				
GA-AA-52		4.0 (5/32")	0.5			3.2				
GA-AA-53	3.2		4.8	9.2						
GA-AA-54	4.8		6.4	10.8						
GA-AA-55	6.4		8.0	12.4						
GA-AA-56	8.0		9.6	14.0						
GA-AA-58	9.6		12.7	17.1						
GA-AA-510	12.7		15.9	20.3						
GA-AA-512	15.9		19.1	23.5						
GA-AA-62	4.8 (3/16")	0.5	3.2	4.88	4.98	8.3	9.04 ~ 10.03	1.52	1.16	1.42
GA-AA-63		3.2	4.8			9.8				
GA-AA-64		4.8	6.4			11.4				
GA-AA-65		6.4	8.0			13.0				
GA-AA-66		8.0	9.6			14.6				
GA-AA-68		9.6	12.7			17.8				
GA-AA-610		12.7	15.9			21.0				
GA-AA-612		15.9	19.1			24.1				
GA-AA-614	19.1	22.2	27.3							
GA-AA-616	22.3	25.4	30.5							
GA-AA-82	6.4 (1/4")	0.5	3.2	6.53	6.63	9.5	12.07 ~ 13.34	2.03	2.05	2.49
GA-AA-84		3.2	6.4			12.7				
GA-AA-86		6.4	9.6			15.9				
GA-AA-88		9.6	12.7			19.1				
GA-AA-810		12.7	15.9			22.2				
GA-AA-812		15.9	19.1			25.4				
GA-AA-814		19.1	22.2			28.6				
GA-AA-816		22.3	25.4			31.8				



DIN Convention

Part No.	Size ø	Grip Range		Hole Size		L max.	øB -	D -	Shear (typical) kN	Tension (typical) kN
		min.	max.	min.	max.					
GA-AA-2406	2.4 (3/32")	0.5	3.0	2.5	2.6	6	4.3 ~ 5.0	0.8	0.30	0.35
GA-AA-2408		3.0	5.0			8				
GA-AA-2409		4.0	6.0			9				
GA-AA-2412		6.0	9.0			12				
GA-AA-3205	3.2 (1/8")	0.5	2.0	3.3	3.4	5	5.8 ~ 6.5	1.2	0.54	0.65
GA-AA-3206		1.0	3.0			6				
GA-AA-3207		2.0	4.0			7				
GA-AA-3208		3.0	5.0			8				
GA-AA-3209		4.0	6.0			9				
GA-AA-3210		5.0	7.0			10				
GA-AA-3212		7.0	9.0			12				
GA-AA-3214		9.0	11.0			14				
GA-AA-3216		11.0	13.0			16				
GA-AA-3218		13.0	15.0			18				
GA-AA-3220		15.0	17.0			20				
GA-AA-3225	17.0	22.0	25							
GA-AA-4006	4.0 (5/32")	0.5	2.0	4.1	4.2	6	7.0 ~ 8.0	1.5	0.85	1.02
GA-AA-4008		2.0	4.0			8				
GA-AA-4010		4.0	6.0			10				
GA-AA-4012		6.0	8.0			12				
GA-AA-4014		8.0	10.0			14				
GA-AA-4016		10.0	12.0			16				
GA-AA-4018		12.0	14.0			18				
GA-AA-4020		14.0	16.0			20				
GA-AA-4025		16.0	21.0			25				
GA-AA-4806	4.8 (3/16")	0.5	1.5	4.9	5.0	6	8.5 ~ 9.5	1.6	1.16	1.42
GA-AA-4808		1.5	3.5			8				
GA-AA-4810		3.5	5.5			10				
GA-AA-4812		5.5	7.5			12				
GA-AA-4814		7.5	9.5			14				
GA-AA-4816		9.5	11.5			16				
GA-AA-4818		11.5	13.5			18				
GA-AA-4820		13.5	15.5			20				
GA-AA-4825		15.5	20.5			25				
GA-AA-4830		20.5	25.5			30				
GA-AA-6412	6.4 (1/4")	3.0	6.0	6.5	6.6	12	11.5 ~ 13.0	2.2	2.05	2.50
GA-AA-6416		6.0	10.0			16				
GA-AA-6418		10.0	12.0			18				
GA-AA-6421		12.0	15.0			21				
GA-AA-6425		15.0	19.0			25				

STANDARD BREAKSTEM RIVETS



Can't find what you are looking for?

We can provide customized finishing and colouring.
Contact your nearest [Gripwell](http://www.gripwell.com.sg) team for assistance!